

iSURVEY, you SURVEY, we all SURVEY

by [Catherine Dizon](#)

TCEC collects data on handheld devices, using an offline survey program iSURVEY. So how, exactly, does it all work? This article is a quick how-to guide for collecting data on handheld devices. We've even included links that direct you to our short demonstration videos showing just how fast and convenient it really is.

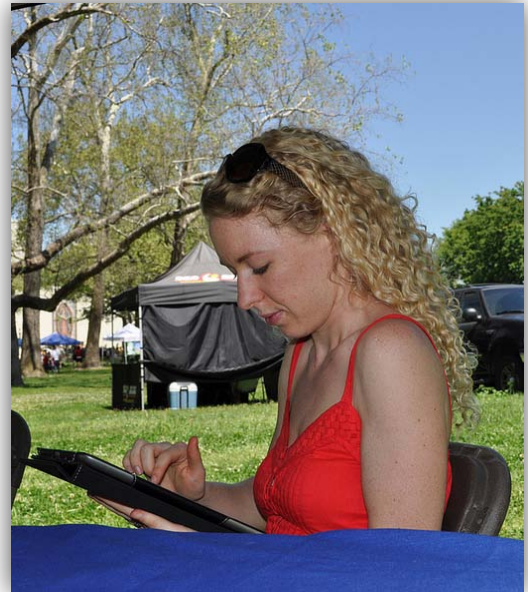
Set up involves 3 simple steps. If you click the links, you can watch short demos on YouTube:

1. [Download the iSURVEY app and authenticate devices](#)
2. [Assign the survey to the device](#)
3. [Download the survey to the device](#)

When you're ready to enter data, here's how it's done:

4. [Collecting data](#)

[If you are unable to access YouTube content, you can watch a recording via Readytalk that compiles these first four clips into one 5-minute demo at http://programeval.ucdavis.edu/files/ReadyTalk/Device_Demo/lib/playback.html].



Once you've collected some data, your data will need to be uploaded from each device into your account. Watch how to do this:

5. [Upload results from each device](#)



Then you can access your data in several ways:

You can view your results as well as create some basic frequency and percentage charts of your data directly in your iSURVEY account:

- *Quick Charts* displays your results in column (vertical bar) charts
- *Dashboard Charts* displays your results in various layout options such as pie, bar, and column charts
- *Real Time Charts* displays your results and can refresh every five minutes so you can see your data change in real time.

Alternately, you can download your results from iSURVEY to your computer in four different formats:

- *Formatted*: Responses to each question are listed in a different column, and each multiple choice option is listed in a *separate* column, exportable as a .csv file
- *Formatted Variation*: Responses to each question are listed in a different column, and multiple choice options are listed in the *same* column, exportable as a .csv file
- *List*: Responses to each question are listed in a row, exportable as a .csv file
- *SPSS*: Allows you to format and save data as a .sav file for SPSS

To see how to access, visualize and export your data from iSURVEY, watch this short demo:

6. [View your results from iSURVEY](#)

To read up on all the nitty gritty, check out our [website](#) for more resources.

When you would like to try any of this out for yourselves, give TCEC a call and we can set up a trial run for you. Our handheld device hotline number is 530.754.8317.

Happy data collecting!



Photos by: STAND Projects, iSURVEY and TCEC Staff